

UPGRADES

TelePresence smart



TelePresence



TelePresence.



Plus Maintenance Manager.



Plus Maintenance Manager.

■ Networking with printnet

ROLAND 300 ■ 500 ■ 700 HiPrint 700 DirectDrive ■ 900 ■ 900, XXL

TelePresence smart: condition-oriented maintenance for greater production reliability and optimization of your maintenance processes.

For permanent top performance

High production speeds of modern presses and technologies for optimizing makeready time enable high productivity of your machinery. To ensure that your presses perform at top level over their entire life cycle, regular maintenance operations are important.

The „Maintenance Manager“ software module integrated in TelePresence coordinates the care and maintenance operations and provides an easy-to-understand overview of the information. In addition, it lists the individual urgencies and time requirements, allowing you to integrate the maintenance actions into the production process. Via the remote diagnostic system you will receive quick help in any case of necessary servicing.

Integration of all machines

With TelePresence smart you can extend the functions and advantages of the Maintenance Manager to your machinery as a whole. This requires only one press to be equipped with TelePresence, all the others will be licensed for use of the Maintenance Manager.

Additionally, basic maintenance will be carried out on all presses thus covered. In this way the Maintenance Manager is optimally adjusted to the condition of each individual press, and the start into press care and maintenance facilitated. TelePresence coverage can include presses of model lines ROLAND 300, 500, 700, 900 and 900, XXL that are networked via printnet.

You profit threefold from TelePresence smart

- You increase the availability of your entire machinery and thereby offer your customers maximum dependability.
- In a servicing case, you profit from TelePresence coverage of a press by fast and direct online help.
- Maintenance events of connected peripheral equipment can be integrated. ■■

Advantages

- Increase of production reliability by condition-oriented maintenance for all networked presses
- Optimization of your maintenance processes
- Fast reaction and direct help in servicing case
- Increase in availability of your machinery as a whole
- Cost-saving maintenance
- Enormous price advantage over individual purchase of TelePresence as upgrade
- Automatic documentation of maintenance histories

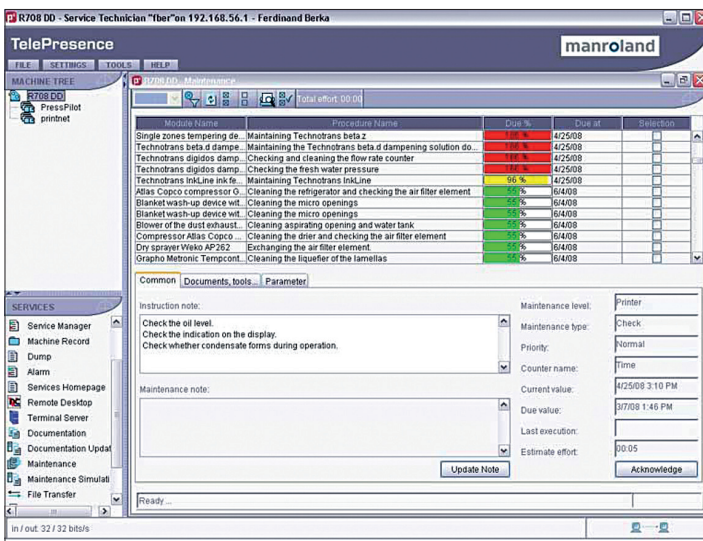
Options

The maintenance events of all integrated presses are visualized as standard on the control console computer. Optionally, a TelePresence client can be installed on an office PC. As a basis for this, this PC needs to be integrated into the network

Remarks

- Upgradability depends on the versions of program, control console, printnet ServerNet, and on the series of the press. Therefore, it has to be determined for every press individually
- The licenses for the Maintenance Manager that result from the purchase of TelePresence smart are valid only in connection with at least one existing or yet to be purchased license for TelePresence

Furthermore, the manroland general terms and conditions of delivery for spare parts and the manroland general terms and conditions for TelePresence contracts apply.



TelePresence smart: Selecting the press in question from the system tree causes the respective maintenance events to be displayed in easy overview.

manroland AG 1 TelePresence smart 02 english 05/2008 printed in Germany

ps printservices®
a trademark of manroland

Contact: Sheetfed
printservices@manroland.com

manroland AG
Postfach 10 12 64
63012 Offenbach / Germany

manroland

Tel. +49 (0) 69 83 05 - 0
Fax +49 (0) 69 83 05 - 14 40
www.manroland.com